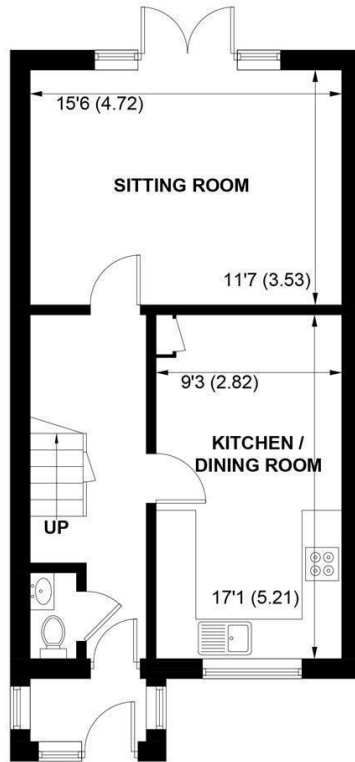
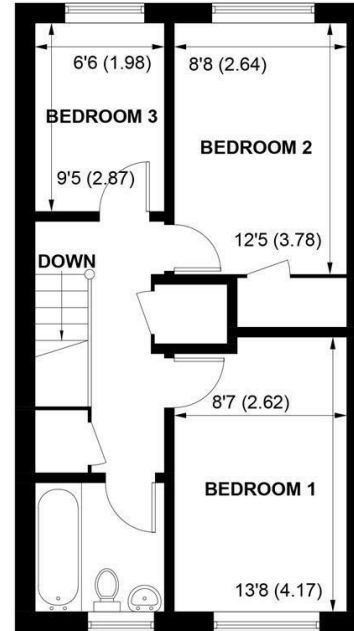




85 LOVEYS ROAD, YAPTON, WEST SUSSEX, BN18 0HQ



GROUND FLOOR



FIRST FLOOR

APPROXIMATE GROSS INTERNAL AREA = 928 SQ FT / 86.2 SQ M

NOT TO SCALE (For illustrative purposes only as defined by RICS Code of Measuring Practice) 2021 ©
Produced for Sims Williams

£1,295 PCM

85, LOVEYS ROAD,
YAPTON,
WEST SUSSEX, BN18 0HQ

- Terraced Home
- Village Location
- Entrance Hall
- Cloakroom
- Kitchen/Breakfast Room
- Separate Lounge
- Three Bedrooms & Bathroom
- Garden
- Deposit: Five Weeks' Rent

EPC RATING

Current = C
Potential = B

COUNCIL TAX BAND

Band = B

This bright, terraced house has good accommodation which includes three bedrooms.

On the ground floor there is an entrance hall and cloakroom, along with a decent sitting room.

There is also a generous kitchen/breakfast room with integrated oven/ hob.

On the first floor, there are three bedrooms and a bathroom.

The bathroom has a shower over the bath.

Outside, there is informal parking and the property has a small area of garden to the front and a larger garden to the rear, which is laid partly to lawn.

The landlord may consider a pet.

Yapton is a popular village with primary school and a selection of shops. The nearby village of Barnham, has a wider range of shops, as well as a mainline station to London Victoria.

Directions: From the shops at Main Road, Yapton head east and take the second exit off the mini roundabout into Bilsham Road. Turn right into Loveys Road and stay on this road until you reach the end, passing Cobham Close just before you reach the house.

Application and Fees Holding Deposit – capped at One weeks rent Paid by you to reserve the Property. This will only be retained by us if any relevant person (including any guarantor(s)) withdraw from the tenancy, fail a Right-to-Rent check, provide materially significant false or misleading information, or fail to sign their tenancy agreement (and/or Deed of Guarantee) within 15 calendar days.

